

Non Return Valve (NRV-IA Series)



Application:

- IDMC Non Return Valves are used in sanitary pipeline in dairy, food, beverages and pharmaceutical industry.
- It is used to prevent reverse flow in sanitary piping systems.

Features:

- A low-cost and reliable product for continuous operation plants.
- Valve with Tri-Clamp (TC) type design for ease of maintenance.
- Designed for direct welding to sanitary piping systems.
- Designed for smooth passage of the product with minimum pressure drop across the valve.
- Hygienic design suitable for Cleaning-In-Place (CIP).
- Low opening pressure to maintain flow through the valve without obstruction.
- Robustly designed valve body.

Technical specifications:

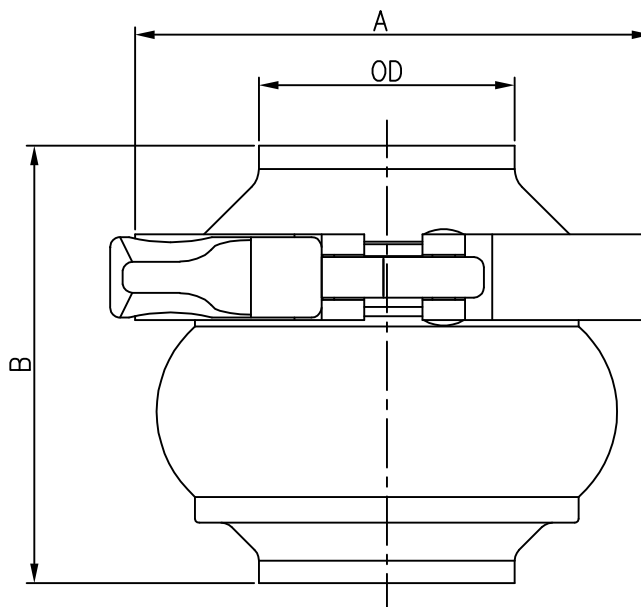
- Sizes : SMS 25 to SMS 76 (from pipe OD 1" to 3" suitable for ASTM A270)
- Product wetted steel parts : SS 316 L or SS 304
- Other steel parts : SS 304
- Product contact Gaskets/Seals : EPDM (suitable to US FDA 21 CFR 177.2600)
- Normal product pressure : 4 Bar
- Maximum product pressure : 10 Bar
- Temperature range : 2°C to 90°C

Operation/Working:

- Non Return Valve opens when the liquid flow pressure below the valve disc exceeds force of the spring on the valve plug.
- The valve closes when pressure equalization is achieved on reverse flow.

Standard dimensions:

Valve Sizes	Dimensions in mm		
	OD	A	B
SMS 25	25.4	80	87
SMS 38	38.1	94	87
SMS 51	50.8	104	87
SMS 63	63.5	118	87
SMS 76	76.2	131	87



124-128, GIDC Estate, Vithal Udyognagar 388 121, Anand district, Gujarat, India, Ph: +91-2692-236375, 220100
idmc@idmc.com www.idmc.com Toll free:1800-103-3567
Gurugram: +91-124-4931370, Lucknow:+91-9451970174, Patna: +91-9934360635

Processing & packaging solutions to make food safe